



HTTF

(High Tech Tensile Fabric)
ASMA GERME MEMBRAN SİSTEMLER

HTTFÇADIR SİSTEM ÇALIŞMALARI
HTTF TENT SYSTEM WORKS



HAKKIMIZDA

HTTF (High Tech Tensile Fabric) Tekstil Mimarisi' n de kaliteyi müşteri odaklı bir perspektif ile şirket kültürünün ana ögesi haline getirmeyi hedefler. Bu doğrultuda tüm **HTTF** çalışanları için kalite bir yaşam biçimidir.

Asma Germe Membran Sistemler üretim noktamız sürekli olarak teknolojik gelişmeleri takip edip, bu alandaki tecrübesiyle birleştirerek bilgisayar destekli tasarım ve ar-ge çalışmalarıyla ürün henüz üretilmeden görsel ve ergonomik kalite konusunda taviz vermeden seçkin kaliteli ürünler üretmektedir.

HTTF Asma Germe Membran Üst Örtülerin üretim satış ve satış sonrası hizmetiyle de güven vermektedir. Üretim aşamasında kullandığımız aparat, bağlantı sistemleri ve yardımcı malzemelerinin tamamı kalite belgelidir.

Misyonumuz; Tekstil Mimarisi konusunda her türlü müşteri talebini karşılayabilen, güvenilir ve sürekli olan, aynı zamanda kaliteden ödün vermeyen, çalışanlarını kendilerini sürekli geliştirerek en yüksek performansı gösterebilmeleri için teşvik eden, sektöründe öncü olan, **asma germe membran sistemler** ile ilgili gelişen teknolojiyi yakından takip eden, dürüstlüğe ve satış sonrası hizmete büyük önem veren, zamanı iyi planlayıp kaliteyi ön planda tutarak hızlı bir üretim sistemi uygulayan, paydaşlarının “**gölgesini**” ve çalışmayı sevdiği dışa açık uluslar arası bir Türk firması olmaktadır.



ABOUT US

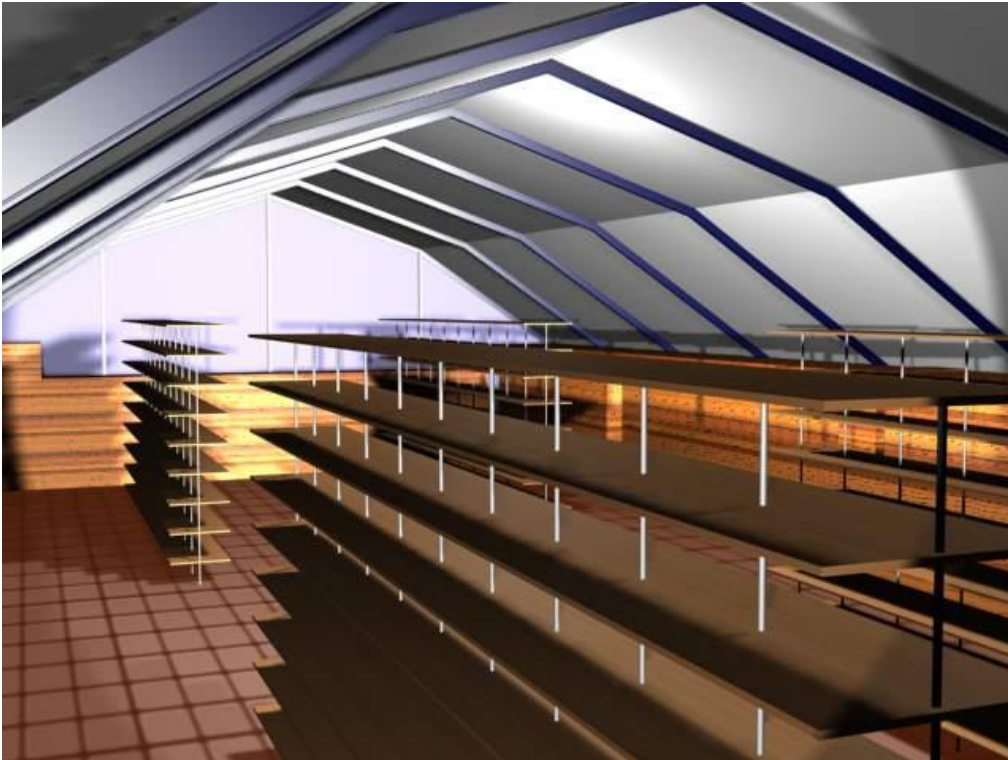
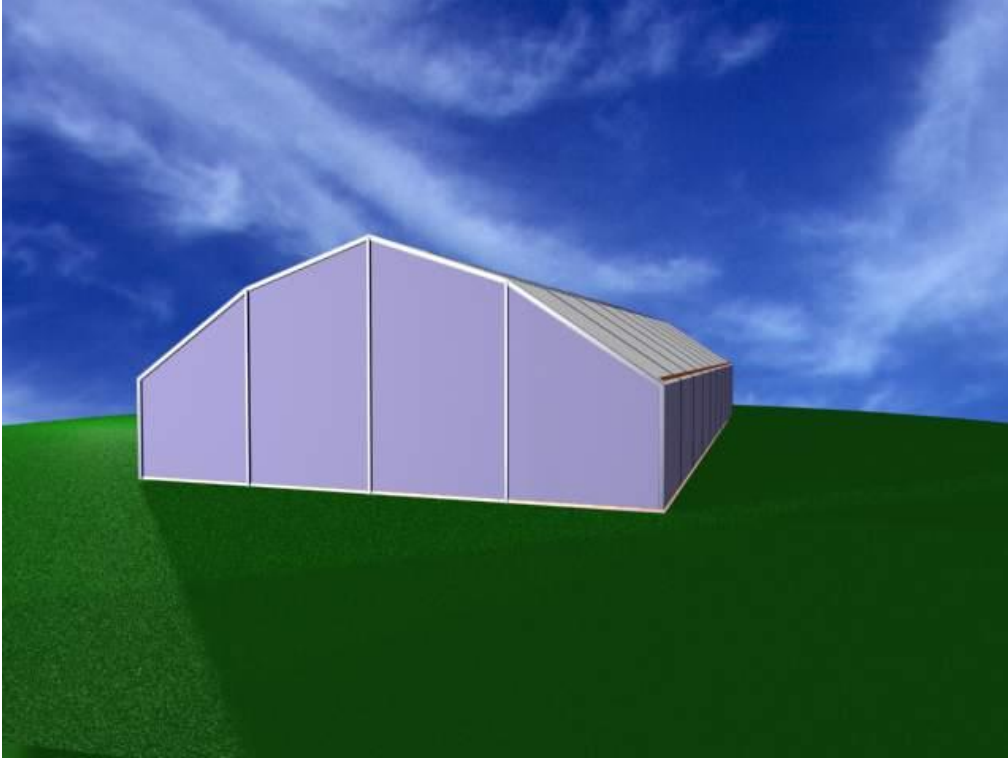
HTTF (High Tech Tensile Fabric) aims to make quality the main element of the company culture with a customer-oriented perspective in Textile Architecture. In this regard, quality is a way of life for all HTTF employees.

Our Suspended Membrane Systems production point constantly follows technological developments and combines it with its experience in this field, producing distinguished quality products without compromising on visual and ergonomic quality before the product is produced, with computer-aided design and R&D studies.

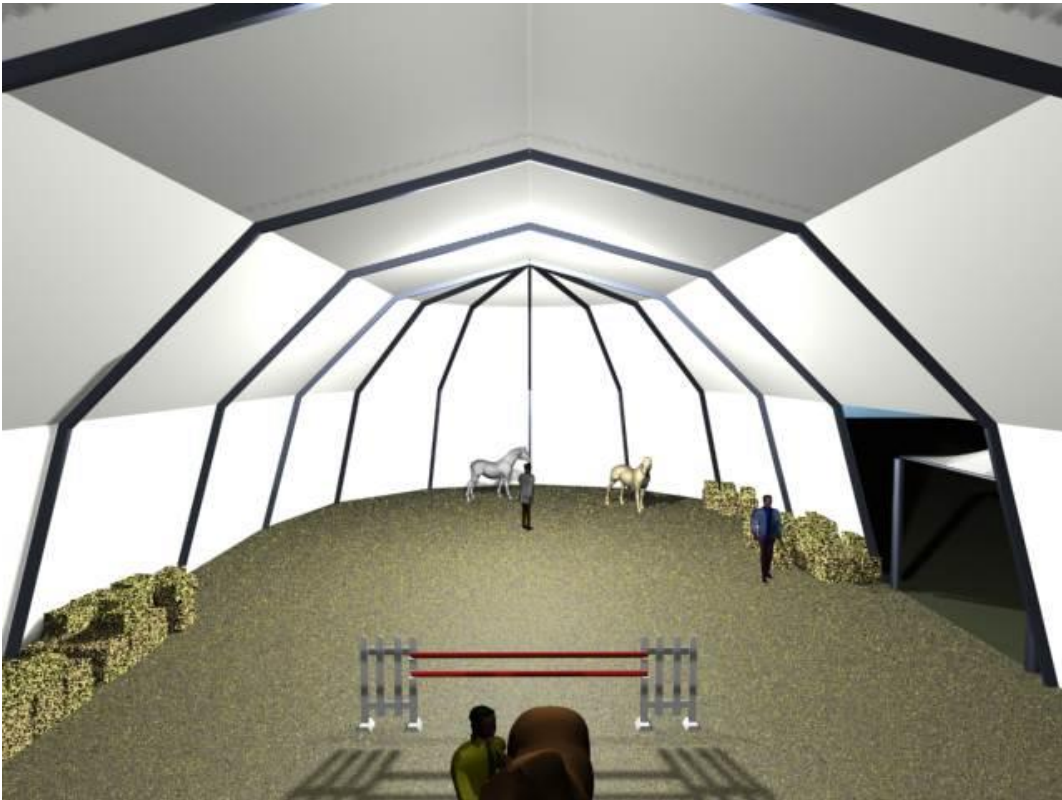
HTTF also provides confidence with the production, sales and after-sales service of Suspended Membrane Coverings. All of the apparatus, connection systems and auxiliary materials we use during the production phase are quality certified.

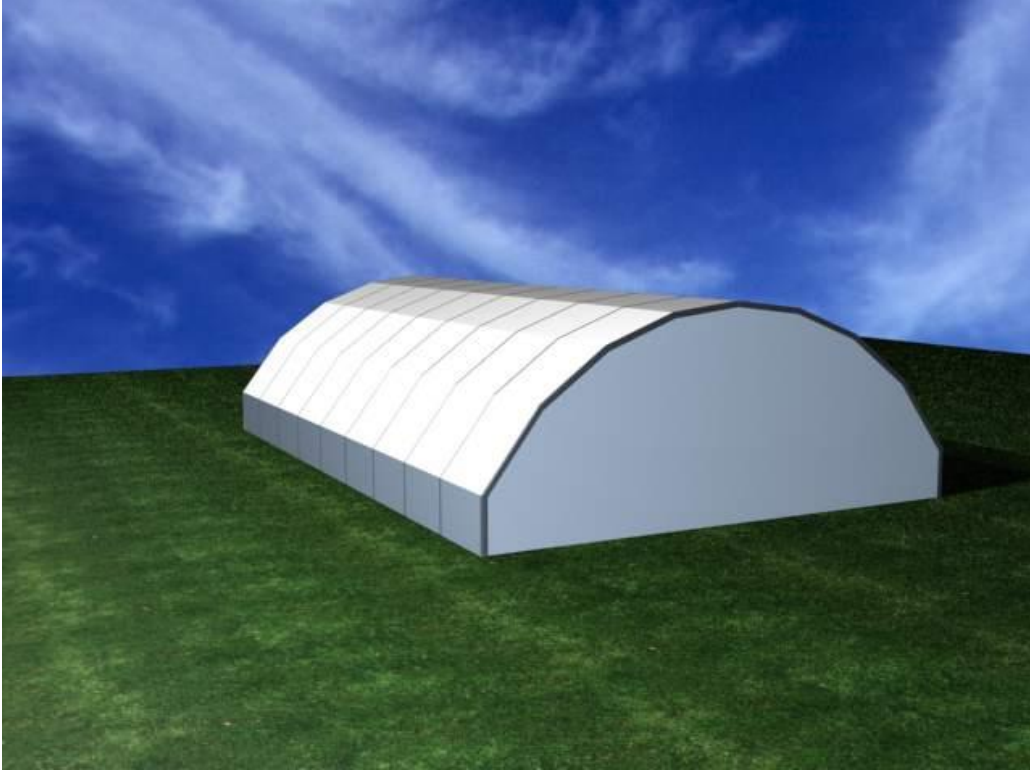
Our Mission; Being able to meet all kinds of customer demands in Textile Architecture, being reliable and continuous, not compromising on quality, encouraging its employees to show the highest performance by constantly improving themselves, being a pioneer in its sector, closely following the developing technology regarding suspended tension membrane systems, having honesty and integrity. Our aim is to be an international Turkish company that attaches great importance to after-sales service, implements a fast production system by planning time well and prioritizing quality, and is open to the outside world and loves to work with its stakeholders.

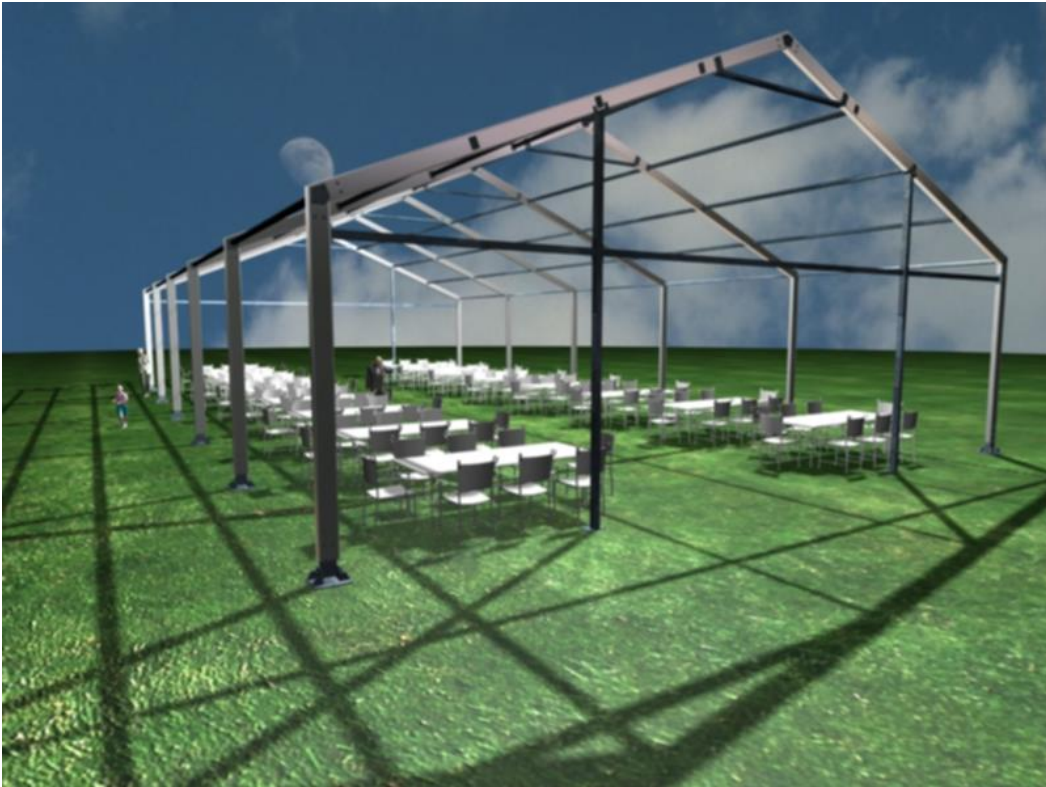
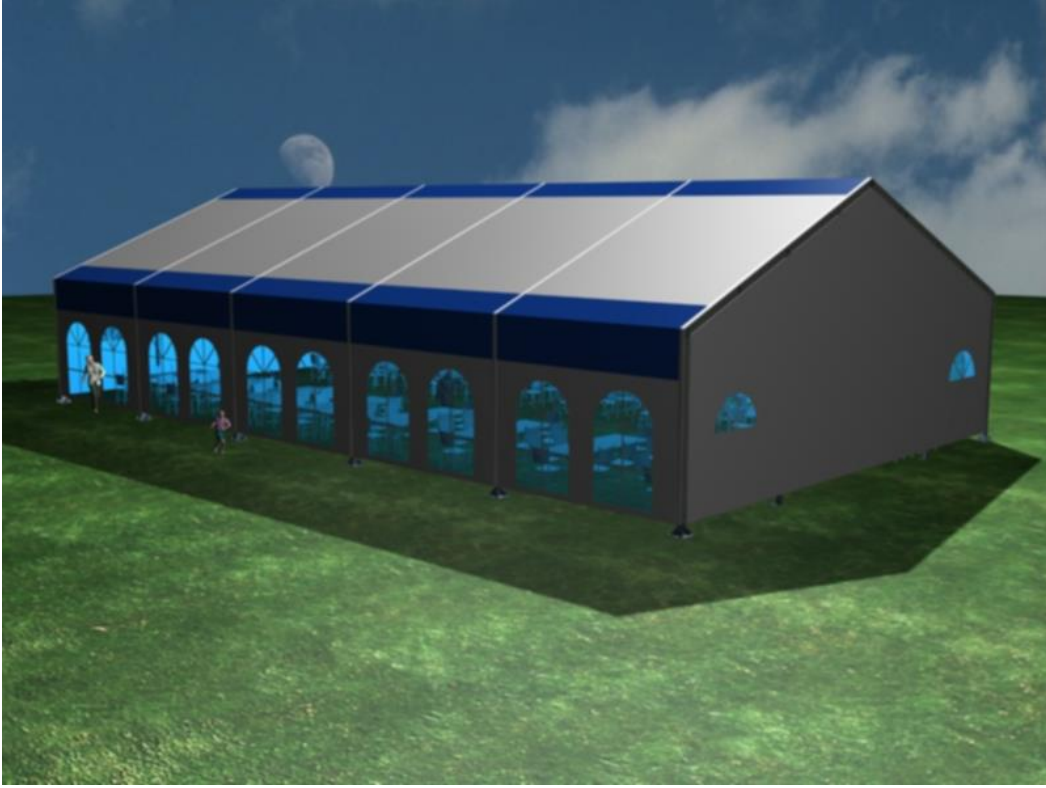
VARIOUS DESIGN EXAMPLES





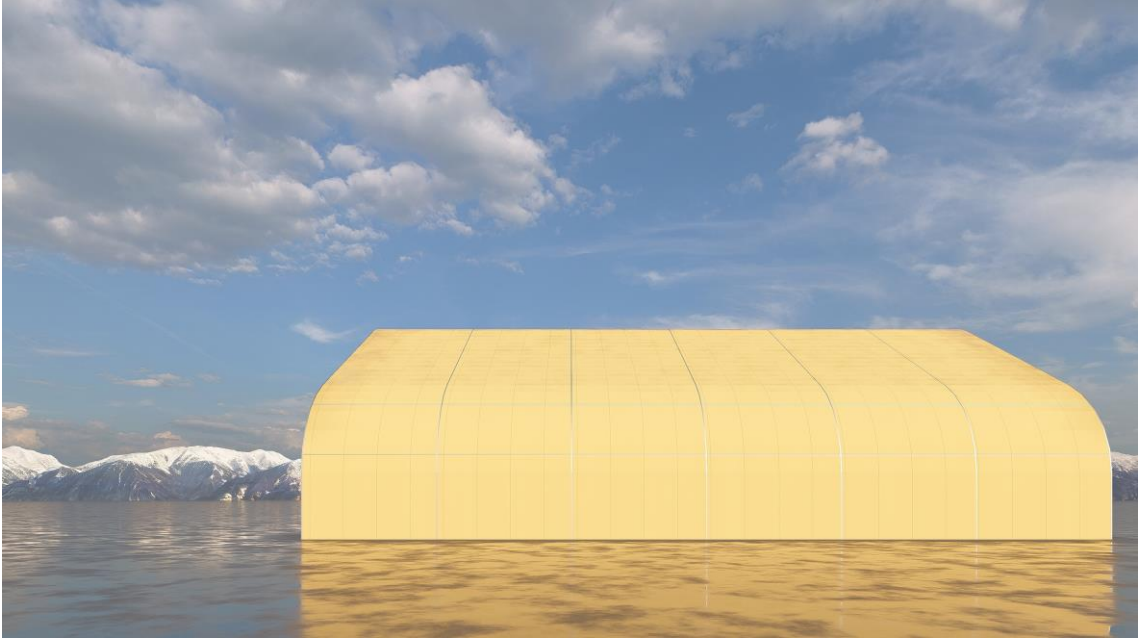










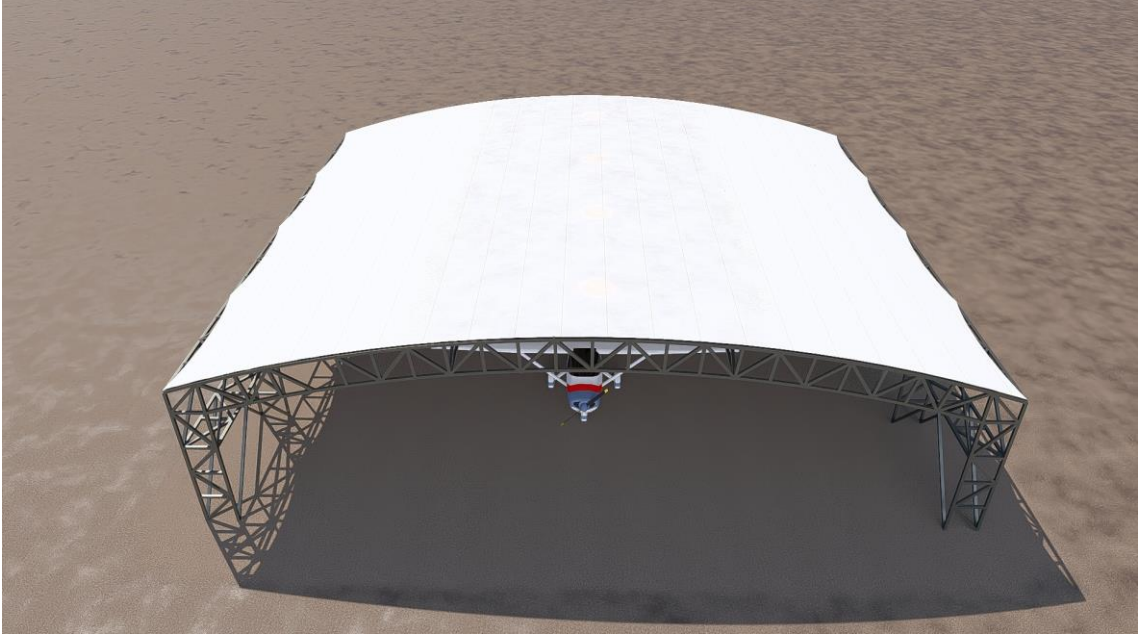




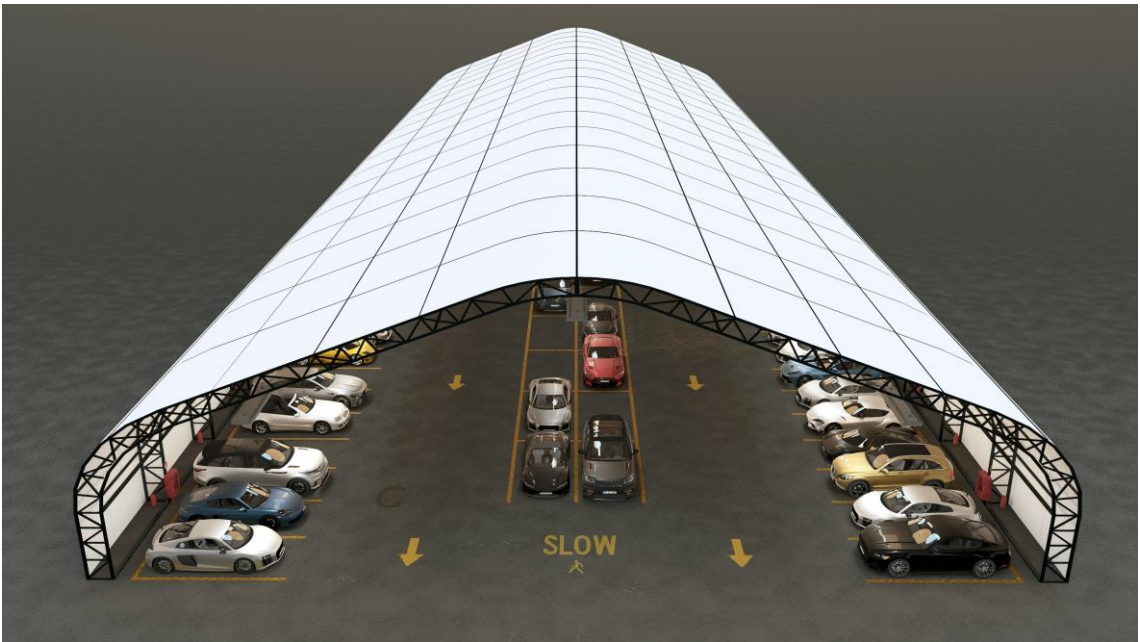
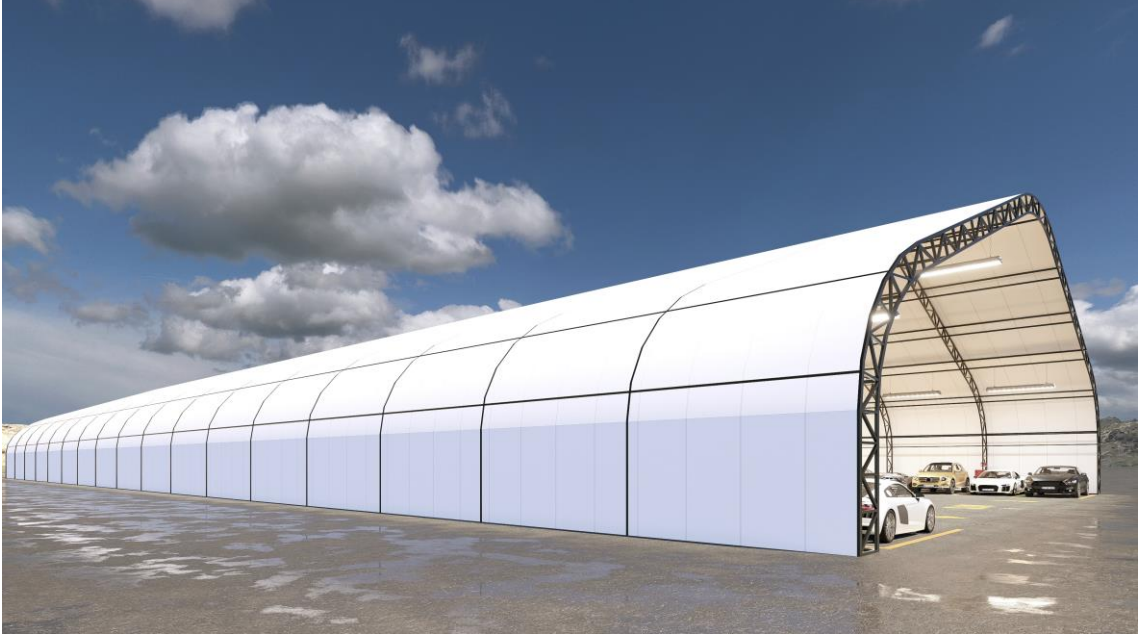










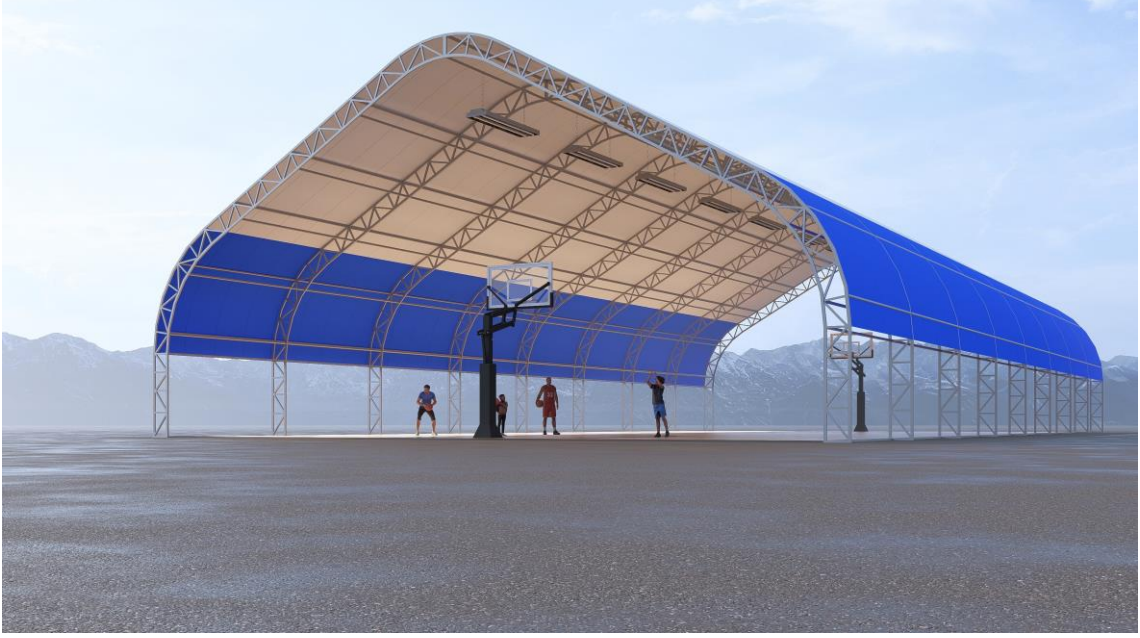


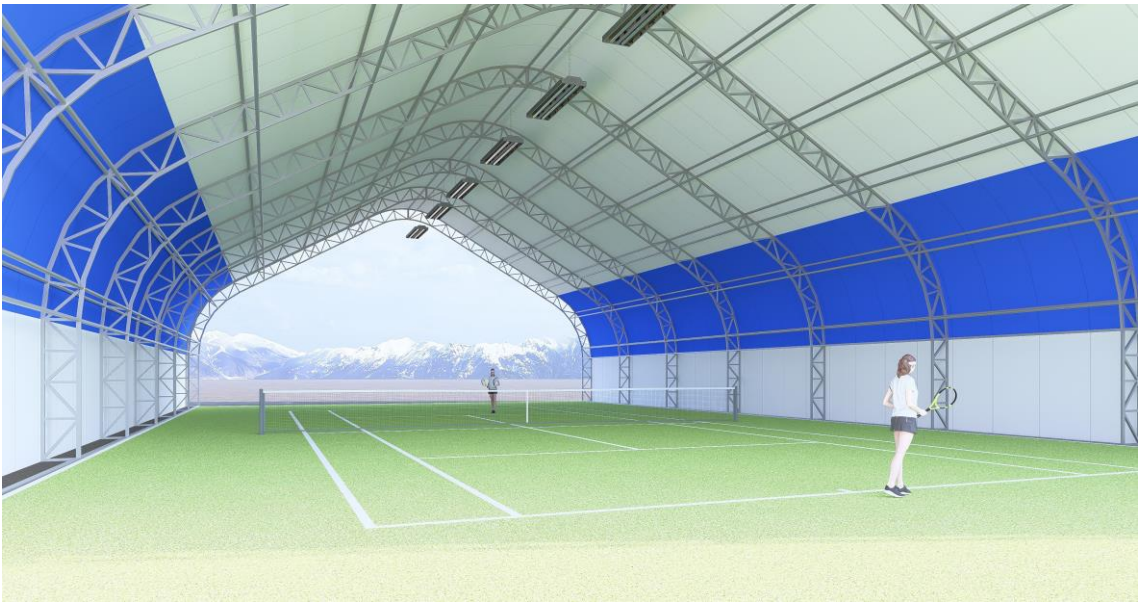
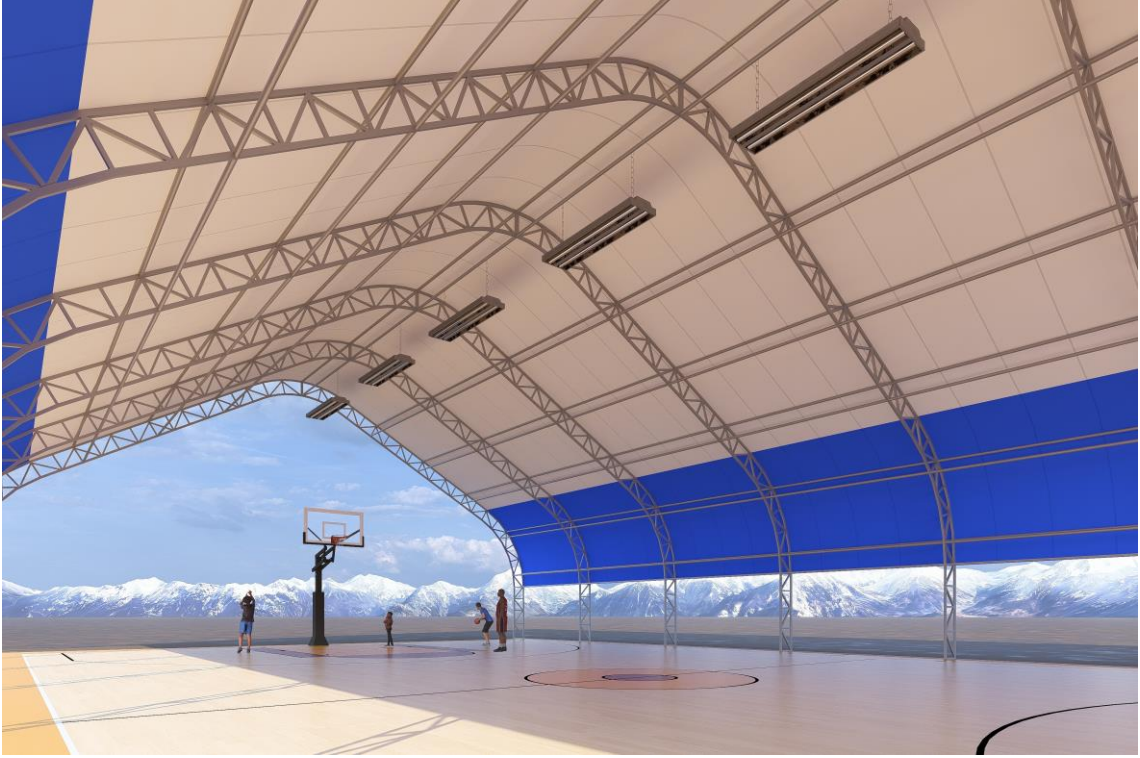


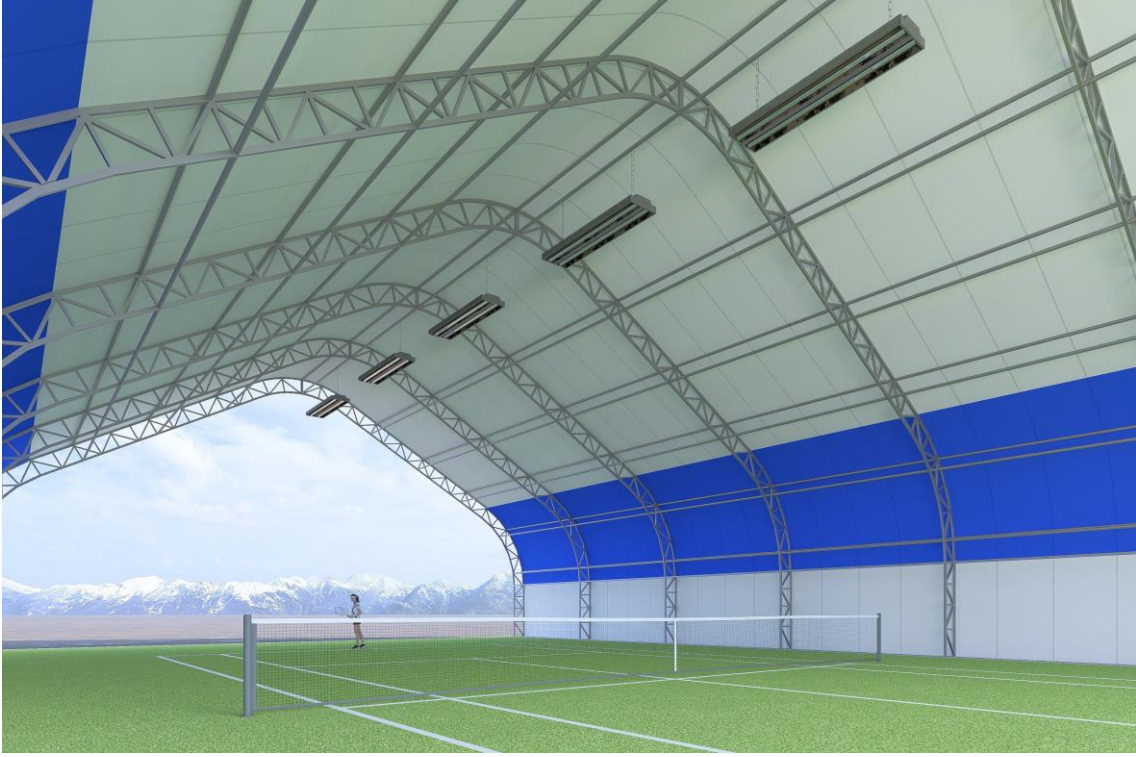














APPLICATION EXAMPLE:

MANİSA FERRERO WAREHOUSE TENT -I







MANİSA FERRERO WAREHOUSE TENT –II



